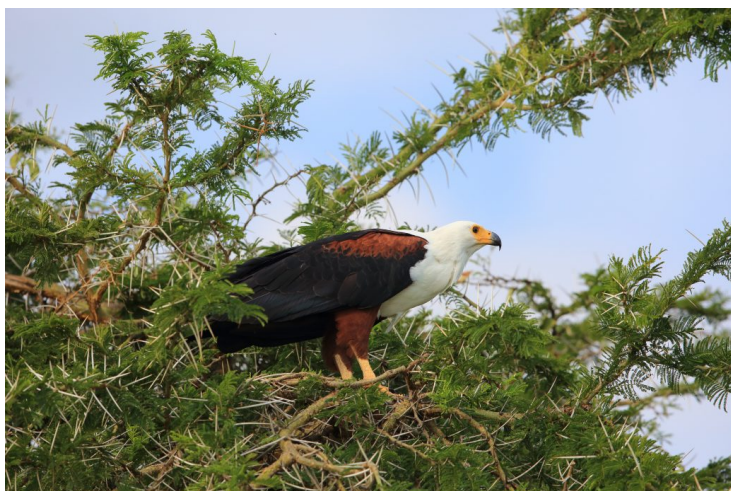


7 Nights Golf Safari, Nairobi, Rift Valley & Sweetwaters.



Excerpt:

Three rounds of golf, game drives, Mount Kenya and the Great Rift Valley. Minimum 2 people required.

Description

Accommodations:

[ROYAL ORCHID](#)]

[GREAT RIFT VALLEY LODGE](#)]

[SWEETWATERS SERENA CAMP](#)]

Quote Includes:

- All transfers in a private vehicle with English speaking driver
- 1 night at Royal Orchid Azure ? Bed and Breakfast
- 2 nights at Great Rift Valley Lodge ? Full Board
- 1 green fee at Rift Valley Golf Club
- 1 night at Sweetwaters Tented Camp ? Full Board
- Game drives

- Sanctuary fees
- 3 nights at Royal Orchid Azure ? Bed and Breakfast
- 2 green fee in Nairobi from a choice of 5 18-hole courses

Golf Courses

1. [Muthaiga Golf Club](#)

- 18 holes, Par 71
- Altitude: 1,710 metres
- Opened (new course): 2004
- Distance (championship): 7,169 yards
- Opened (original course): 1913
- Peter Matkovich Design

2. [Sigona Golf Club](#)

- 18 holes, par 72
- Altitude: 1,980 metres
- Opened: 1938
- Distance (men's): 6,890 yards
- Distance (ladies'): 5,631 yards
- Course rating (SSS): Men-72, Ladies-71
- Tom Simpson design

3. [Limuru Country Club](#)

- 18 holes, par 71
- Altitude: 2,135 metres
- Opened: February 1952
- Distance (men's): 6,739 yards
- Distance (ladies'): 5,582 yards 71
- Mr. J.A. Kinnell & Major W.D.Bacon design

4. [Royal Nairobi Golf Club](#)

- 18 holes, par 72
- Opened: 1906
- Distance (men's): 7021 yards
- Distance (ladies'): 5756 yards

5. [Karen Country Club](#)

- 18 holes, par 72.

- Altitude: 1,830 metres.
- Opened: 1937.
- Distance (championship): 6,924 yards (men's) 6,662 yards (ladies'): 5,707 yards.
- Jean Remy Martin design

Itinerary

Day 1:

Arrive in Nairobi Meet & greet Transfer to hotel. Overnight at Royal Orchid Azure

Day 2:

Breakfast at the hotel. Drive through scenic Great Rift Valley to Naivasha. Lunch at the Great Rift Valley Lodge. Dinner and overnight at Great Rift Valley Lodge

Day 3:

Breakfast at the hotel. Play golf at Rift Valley Golf Club. Dinner and overnight at Great Rift Valley Lodge

Day 4:

Breakfast at the lodge. Transfer to Mount Kenya region. Lunch at Sweetwaters Tented Camp. Game drives. Dinner and overnight at Sweetwaters Tented Camp

Day 5:

Breakfast at the hotel. Drive back to Nairobi. Overnight at Royal Orchid Azure

Day 6:

Breakfast at the hotel. Play golf from a choice of 5, 18-hole courses in Nairobi. Overnight at Royal Orchid Azure

Day 7:

Breakfast at the hotel. Play golf from a choice of 5, 18-hole courses in Nairobi. Overnight at Royal Orchid Azure

Day 8:

Breakfast at the hotel. Transfer to the airport for your home return flight.